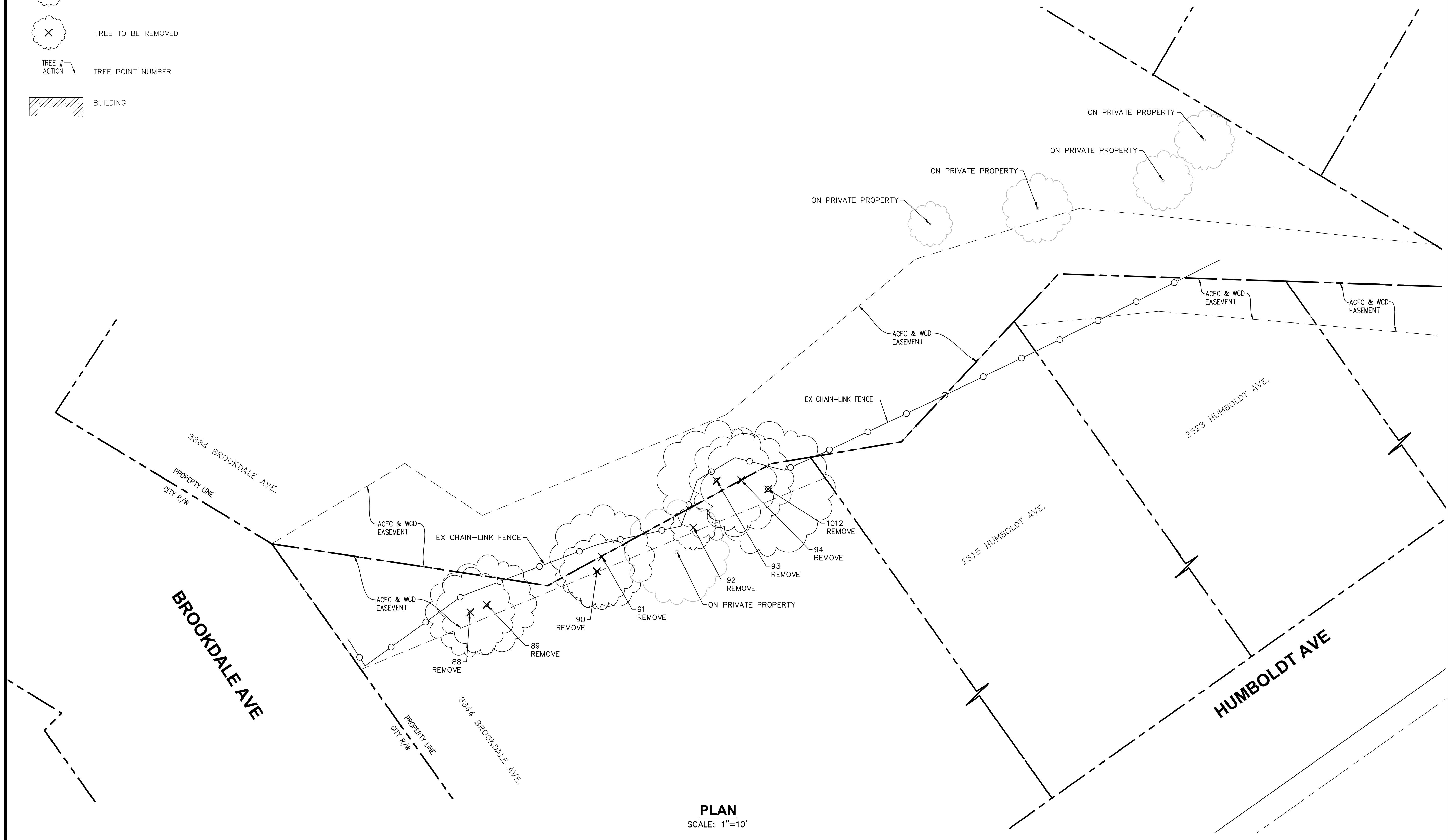
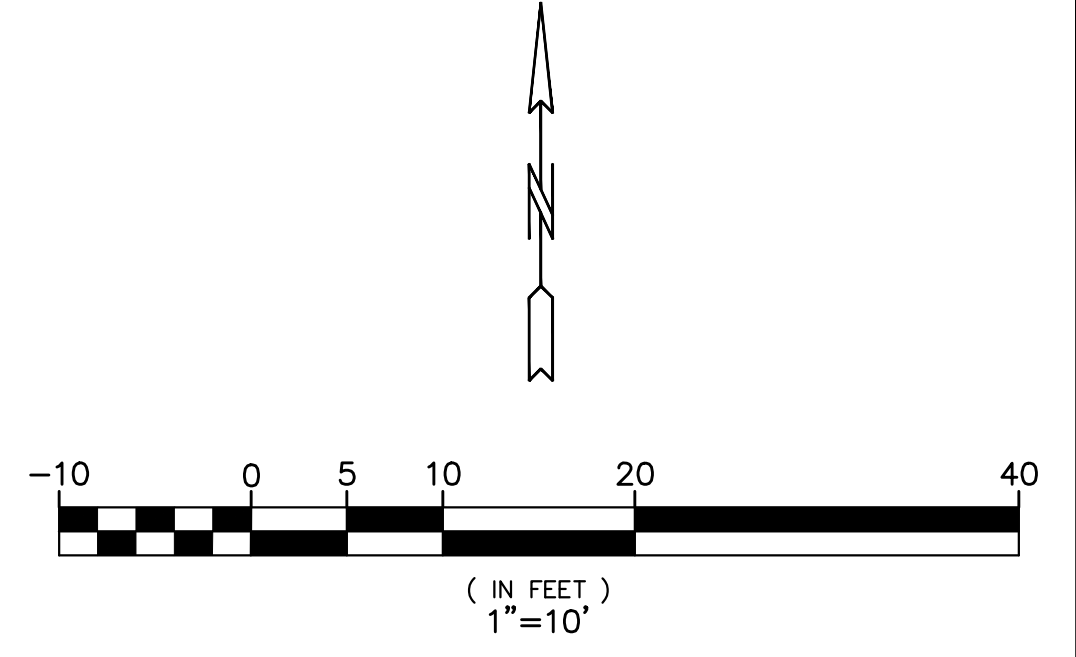
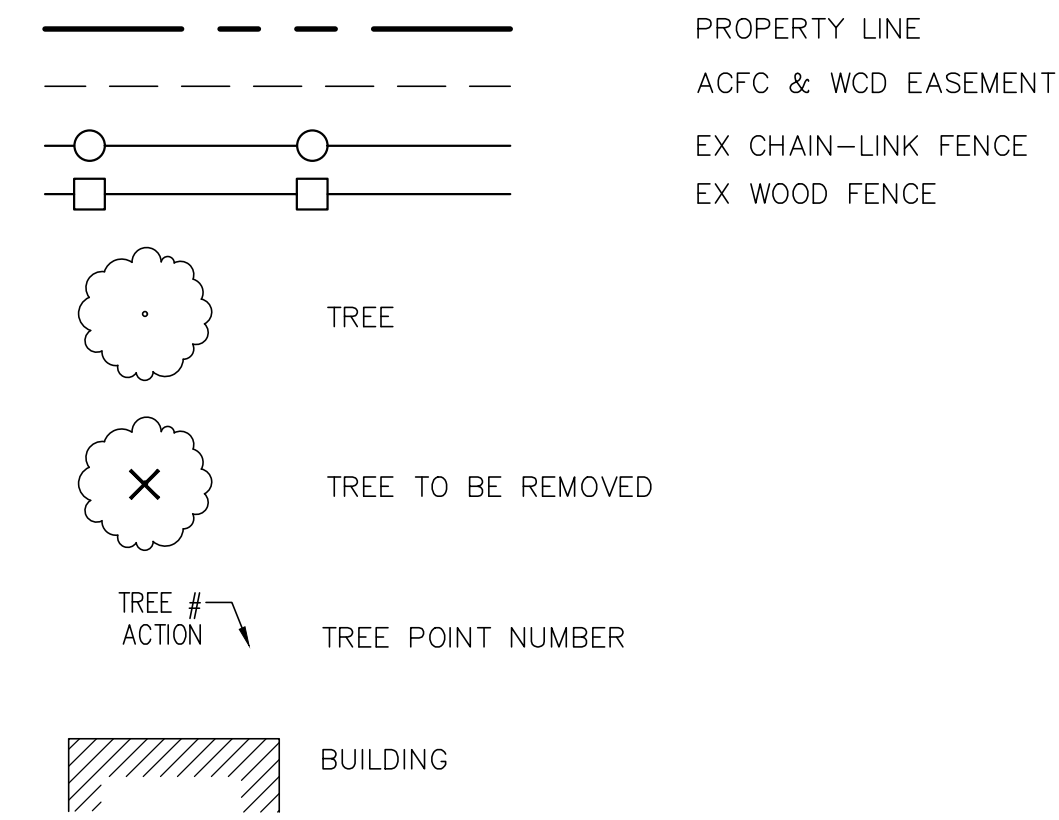


ABBREVIATIONS

ACFC & WCD ALAMEDA COUNTY FLOOD CONTROL & WATER CONSERVATION DISTRICT
 EX EXISTING
 R/W RIGHT-OF-WAY

LEGEND



PLAN
 SCALE: 1"=10'

FOR REDUCED ENGLISH PLANS
 ORIGINAL SCALE IS IN INCHES
 0 1 2 3

REVISIONS

NO.	DESCRIPTION	BY	DATE	APPVD

APPROVED
 ALAMEDA COUNTY FLOOD CONTROL AND WATER CONSERVATION DISTRICT
 PERALTA CREEK TREE MANAGEMENT
 PH1 - BETWEEN BROOKDALE AVE AND
 BERLIN WAY, OAKLAND, ALAMEDA COUNTY
 TREE MANAGEMENT PLAN
 SCALE: 1"=10'
 WORK ORDER NO.
 SPECIFICATION NO.
 SHEET NO. **1** OF **2**
 FILE NO.

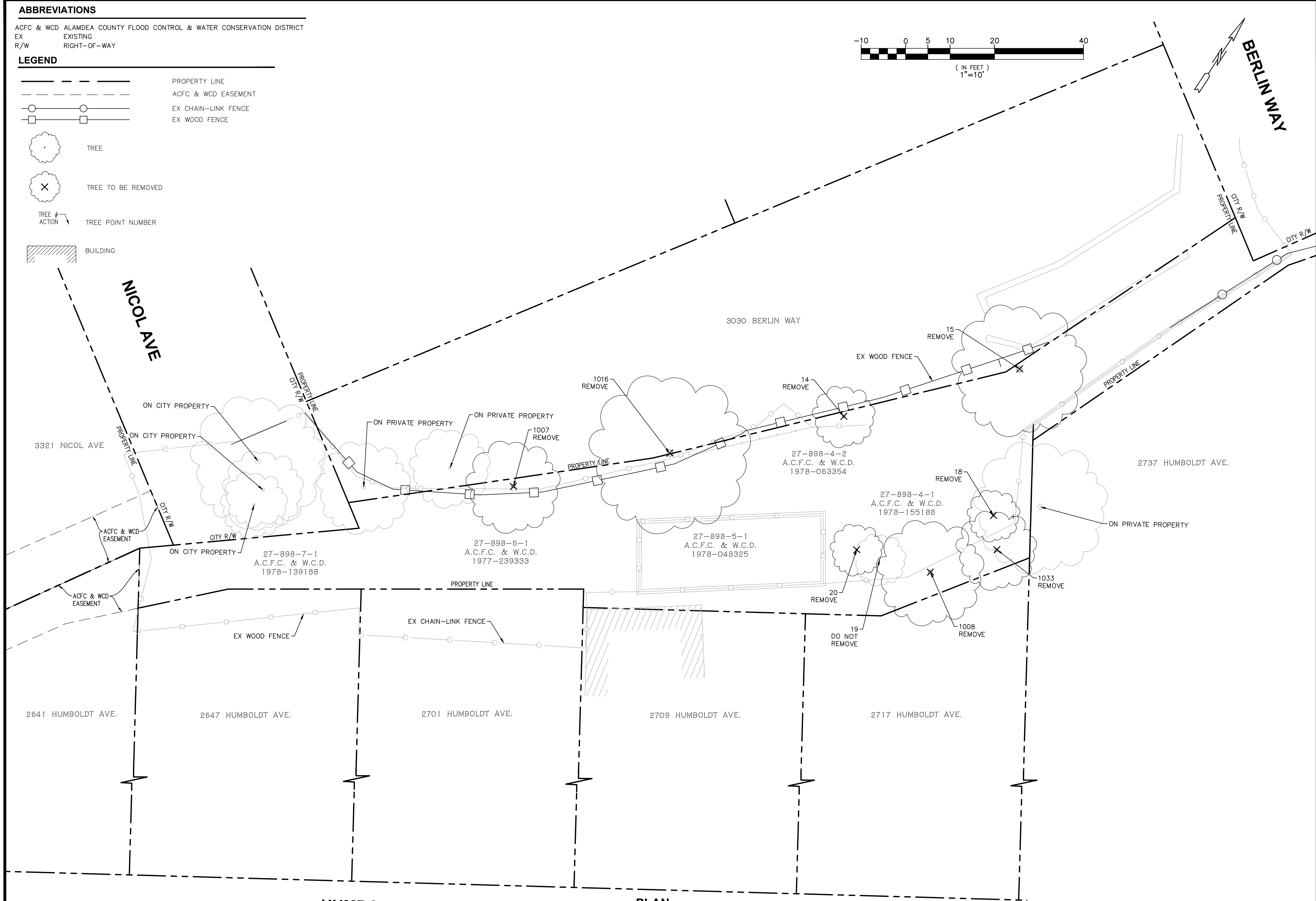
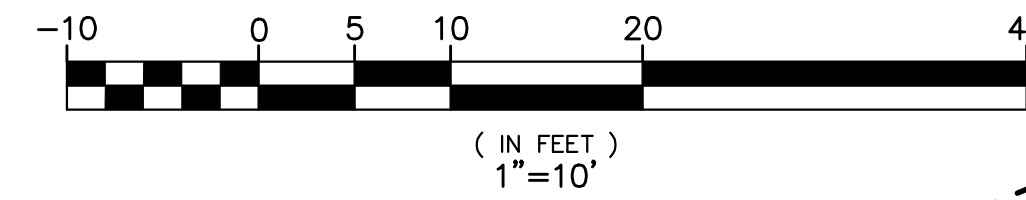
N:\C3D\FLOOD\F235 - Peralta Creek Tree Management - Phase 1\Exhibit\F235-Z12 Ln F- Tree Management PH1.dwg 8-31-21 03:36:32 PM paulmk

ABBREVIATIONS

ACFC & WCD ALAMEDA COUNTY FLOOD CONTROL & WATER CONSERVATION DISTRICT
 EX EXISTING
 R/W RIGHT-OF-WAY

LEGEND

- PROPERTY LINE
- ACFC & WCD EASEMENT
- EX CHAIN-LINK FENCE
- EX WOOD FENCE
- TREE
- TREE TO BE REMOVED
- TREE # ACTION
- BUILDING



NO.	DESCRIPTION	BY	DATE	APPVD

APPROVED

ALAMEDA COUNTY FLOOD CONTROL AND WATER CONSERVATION DISTRICT	
PERALTA CREEK TREE MANAGEMENT	
PH1 - BETWEEN BROOKDALE AVE AND BERLIN WAY, OAKLAND, ALAMEDA COUNTY	
SCALE: 1"=10'	

TREE MANAGEMENT PLAN

WORK ORDER NO.	
SPECIFICATION NO.	
SHEET NO.	2 OF 2
FILE NO.	

N:\C3D\FLOOD\F235 - Peralta Creek Tree Management - Phase 1\Exhibit\F235-Z12 Ln F- Tree Management PH1.dwg 8-31-21 03:36:46 PM paulmk

HUMBOLDT AVE

PLAN
SCALE: 1"=10'

FOR REDUCED ENGLISH PLANS ORIGINAL SCALE IS IN INCHES

Peralta Creek, Oakland CA
TREE INVENTORY, CONDITION and RECOMMENDATION TABLE
Phase 1 Between Brookdale Avenue and Berlin Way

ID	Common	Botanical	Approximate DBH (in inches)	Approximate Height (in feet)	Condition Class	Objective	ACFCD Recommendation*	Notes
14	Eucalyptus, Blue Gum	<i>Eucalyptus globulus</i>	28"	60'	80% - Good	PRN Crown Clean & End Weight Reduction	Tree is too large for the confined space. To eliminate risk to neighboring properties and reduce fire hazard: Remove	Another very large tree, also growing against the neighboring property concrete wall. This tree was recently heavily pruned and will most likely not need pruning for the next 2 years. Continued monitoring is recommended, due to proximity to concrete wall.
15	Eucalyptus, Blue Gum	<i>Eucalyptus globulus</i>	60"	60'	60% - Fair	PRN Crown Clean & End Weight Reduction	Tree is too large for the confined space. To eliminate risk to neighboring properties and reduce fire hazard: Remove	This tree appears to have been topped, which has caused heavy sucker growth in the upper canopy. It is actually a multi-stem trunk with included bark that is growing into the neighboring property concrete wall. Annual pruning cycle with continued monitoring and future removal is recommended.
18	Acacia, Black	<i>Acacia melanoxylon</i>	5"	20'	60% - Fair	REM Remove Tree	Remove	With severe bark damage at the base of the tree and the overcrowding of the Oak nearby, I recommend removal of this tree while it is still relatively small.
19	Oak, Coast Live	<i>Quercus agrifolia</i>			80% - Good	REM Remove Ivy	Do Not Remove	This tree is somewhat suppressed by the Acacia's, so it is growing tall toward the light. Overall healthy condition, with some ivy growing at the base that should be cut back moving forward.
20	Acacia, Black	<i>Acacia melanoxylon</i>	6"	30'	60% - Fair	REM Remove Tree	Remove	Similar to tree #18, this tree has root damage with poor structure at the base of the tree. It is also overcrowding the Oak nearby. I recommend removal of this tree while it is still relatively small.
88	Eucalyptus, Blue Gum	<i>Eucalyptus globulus</i>	37"-42"	60'	40% - Poor	REM Remove Tree	Remove	Two large eucalyptus growing in between neighboring wooden fence and cyclone fence very heavy end weights in Poor Condition with heavy lean. Removal recommended
89	Eucalyptus, Blue Gum	<i>Eucalyptus globulus</i>	31"-36"	60'	60% - Fair	PRN Crown Clean & End Weight Reduction	Tree is too large for the confined space. To eliminate risk to neighboring properties and reduce fire hazard: Remove	Heavy growth over neighboring property, large codominant stems with included bark; Recommend clearance from neighboring property

Peralta Creek, Oakland CA
TREE INVENTORY, CONDITION and RECOMMENDATION TABLE
Phase 1 Between Brookdale Avenue and Berlin Way

ID	Common	Botanical	Approximate DBH (in inches)	Approximate Height (in feet)	Condition Class	Objective	ACFCD Recommendation*	Notes
90	Eucalyptus, Blue Gum	<i>Eucalyptus globulus</i>	25"-30"	60'	60% - Fair	PRN Crown Clean & End Weight Reduction	Tree is too large for the confined space. To eliminate risk to neighboring properties and reduce fire hazard: Remove	Severe lean with heavy growth over neighboring property suppressed by nearby eucalyptus; Recommend clearance from neighboring property
91	Eucalyptus, Blue Gum	<i>Eucalyptus globulus</i>	49"-60"	75	60% - Fair	PRN Crown Clean & End Weight Reduction	Tree is too large for the confined space. To eliminate risk to neighboring properties and reduce fire hazard: Remove	Very large tree with included bark at base of trunk, tree is extremely close to neighboring house; Recommend clearance from neighboring property - future removal
92	Eucalyptus, Blue Gum	<i>Eucalyptus globulus</i>	19"-24"	60'	60% - Fair	PRN Crown Clean & End Weight Reduction	Tree is too large for the confined space. To eliminate risk to neighboring properties and reduce fire hazard: Remove	Relatively small tree with poor structure, possibly on neighboring property
93	Eucalyptus, Blue Gum	<i>Eucalyptus globulus</i>	49"-60"	75	40% - Poor	PRN Crown Clean & End Weight Reduction	Tree is too large for the confined space. To eliminate risk to neighboring properties and reduce fire hazard: Remove	Poor structure and cankerous growth on trunk from heavy suckering. Trees have been heavily pruned as they are growing over neighboring apartment property
94	Eucalyptus, Blue Gum	<i>Eucalyptus globulus</i>	31"-36"	75	60% - Fair		Tree is too large for the confined space. To eliminate risk to neighboring properties and reduce fire hazard: Remove	Likely neighboring property tree, hangs over canal and may require deadwood removal. Long term future may encroach on fence.

Peralta Creek, Oakland CA
TREE INVENTORY, CONDITION and RECOMMENDATION TABLE
Phase 1 Between Brookdale Avenue and Berlin Way

8/30/2021
21030-40017 Alameda County (PO No. 7668)
Torrey Young, Dryad, LLC

ID	Common	Botanical	Approximate DBH (in inches)	Approximate Height (in feet)	Condition Class	Objective	ACFCD Recommendation	Notes
1012	Bluegum	<i>Eucalyptus globulus</i>	54	105	50% - Fair	Remove	Remove	Poor architecture (few lateral limbs) & codominant stems Leans towards residence (south) Thin canopy, small deadwood Removal of adjacent trees anticipated, increasing exposure Residence within strike zone (south)
1007	Bluegum	<i>Eucalyptus globulus</i>	42	116	60% - Fair	Remove	Remove	Adjacent retaining wall and fence collapsing Condition of root collar could not be discerned Adjacent soil collapse will enhance tree risk Residence within strike zone (south)
1016	Bluegum	<i>Eucalyptus globulus</i>	72	80	60% - Fair	Remove	Remove	Adjacent retaining wall and fence collapsing Condition of root collar could not be discerned Adjacent soil collapse will enhance tree risk Residence within strike zone (south)
1008	Bluegum	<i>Eucalyptus globulus</i>	48	100	35% - Poor	Remove	Remove	Poor architecture (few lateral limbs) & codominant stems and limbs w/weak attachments Thin canopy, small deadwood Trunk bow Leans towards residence (south) Residence within strike zone (south) Ivy growing well up trunk\
1033	Bluegum	<i>Eucalyptus globulus</i>	36	80	40% - Poor	Remove	Remove	Poor architecture (few lateral limbs) & codominant stems and limbs w/weak attachments Thin canopy, small deadwood Trunk bow Leans towards residence (south) Ivy growing well up trunk Not an imminent risk but irreparable conditions